



# COVID-19 Epidemiology Report

## 22<sup>nd</sup> March 2021

**Note:**

The data in this report are extracted from NSS Test and Protect Data Virtualisation tables that record case management information and data collected by NHS Scotland laboratories and UK Government Testing.

Lateral Flow Tests (LFT) are not included.

Cases are assigned to geographies using the postcode recorded at the time of testing or, if that is not available, by the postcode of usual residence derived from the Community Health Index database.

The time necessary to process and submit testing data means that tests carried out in the most recent two to three days will be incomplete. Public Health Scotland estimate that 90% of tests carried out are reported within two days. Positive results can be subject to retest and numbers may therefore change for this reason. The seven-day figures in the report are presented with a lag to try and ensure that a complete period of data are provided.

**Week ending 19/03/2021**

Confirmed new positive case rate per 100,000 population of COVID-19 over 7 days

	Current week		Change from previous week	
	Number of cases	7 day rate per 100,000	Number of cases	7 day rate per 100,000
NHS Highland	75	23.3	-35	-10.9
Argyll & Bute	8	9.3	1	1.2
Highland	67	28.4	-36	-15.3

Testing rates vary across the week and data for the most recent three days will be partially complete.

Recent positive results may be subject to change as a result of re-testing

Includes testing undertaken in NHS Scotland laboratories and UK Government Regional Testing Centre laboratories (including Drive Through Centres and Mobile Units, and Home Testing).

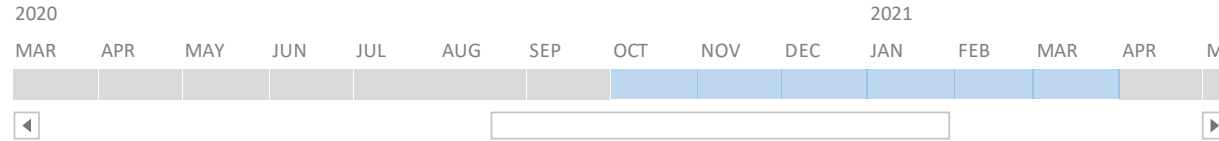
# NHS Highland

## Number of new positive cases of COVID-19

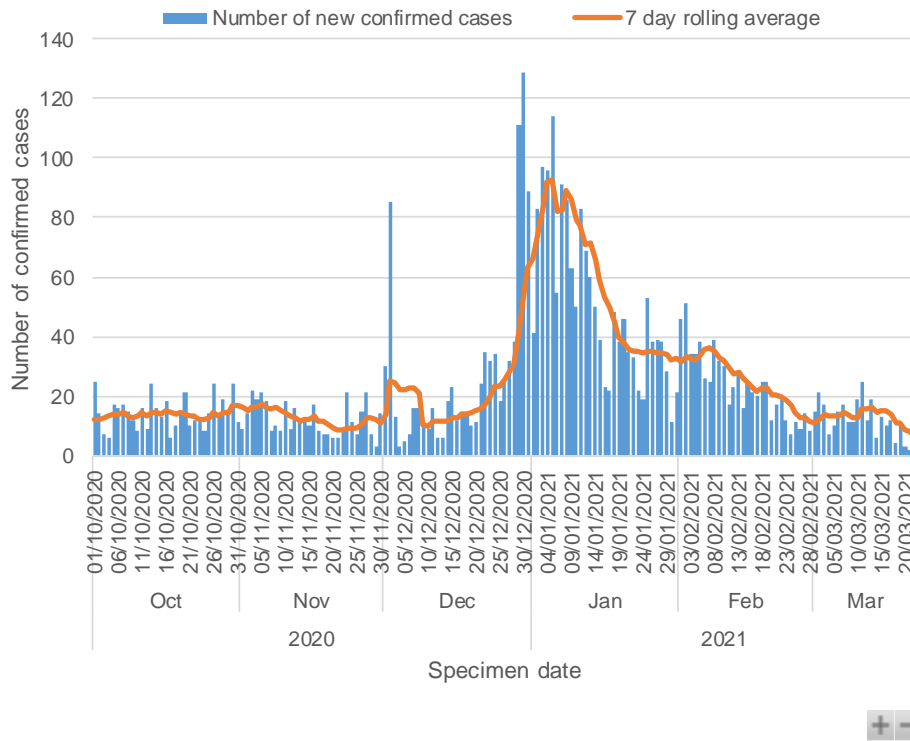


Q4 2020 - Q1 2021

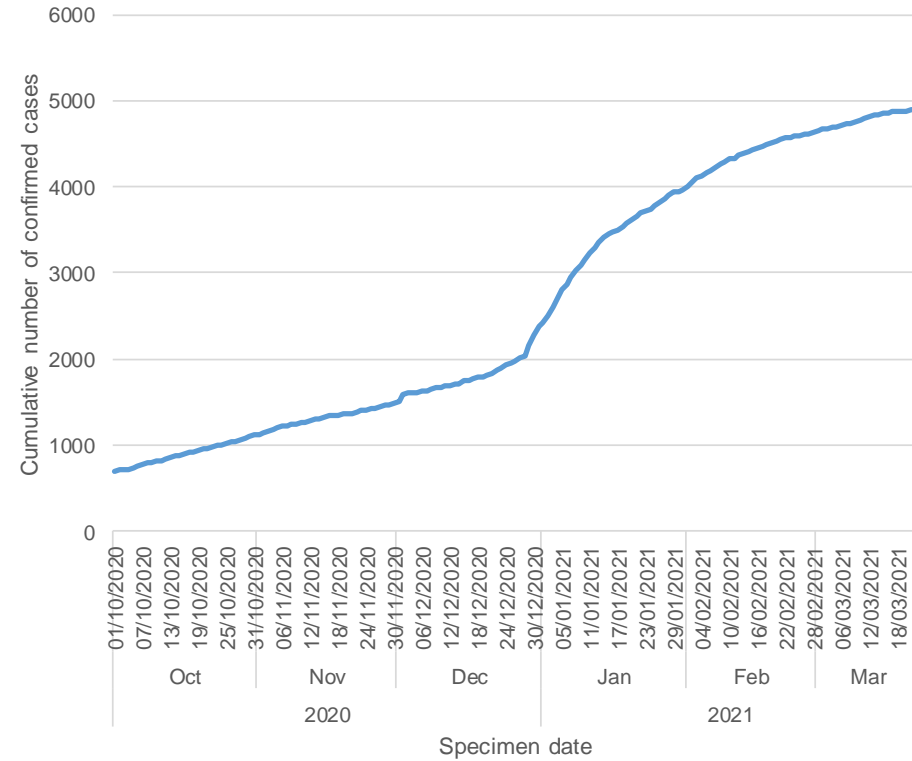
MONTHS ▾



Number of confirmed cases



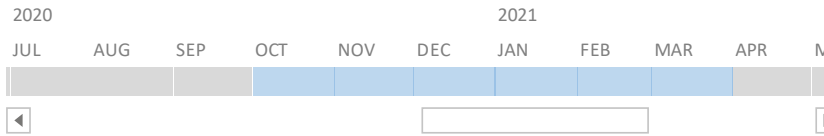
Cumulative number of confirmed cases



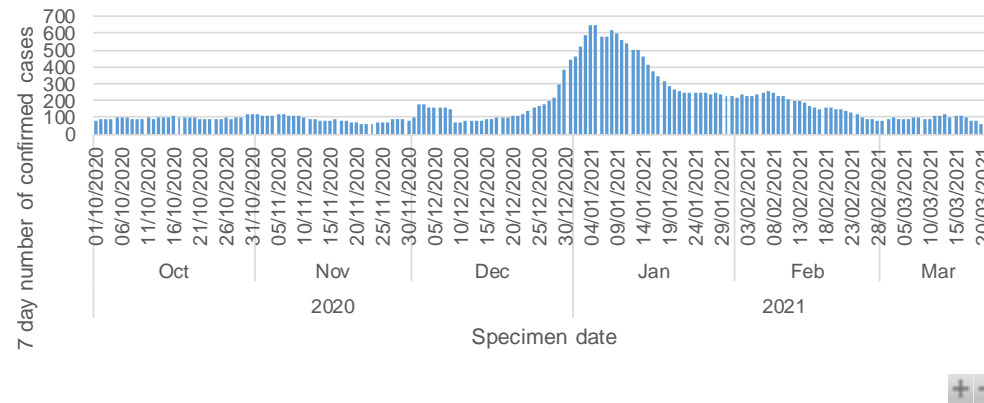
Testing rates vary across the week and data for the most recent three days will be partially complete

Q4 2020 - Q1 2021

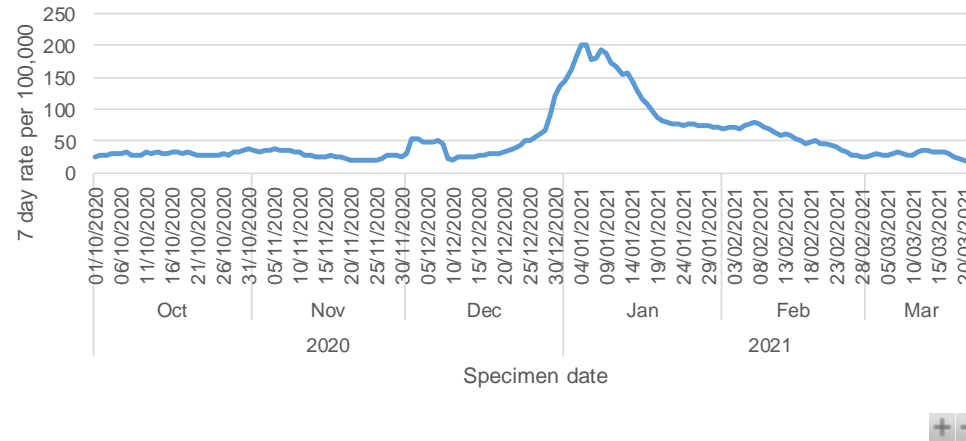
MONTHS ▾



### Number of cases



### Rates per 100,000 population



### Select week ending date

#### Date

22/03/2021	21/03/2021	20/03/2021
19/03/2021	18/03/2021	17/03/2021

	Week beginning	Week ending	Number of cases	7 day rate per 100,000
Selected	13/03/2021	19/03/2021	75	23.3
Previous	06/03/2021	12/03/2021	110	34.2

Testing rates vary across the week and data for the most recent three days will be partially complete

# Number and rates of new cases of COVID-19 over seven days

NHS Highland Local Authority Areas

All ages



Date

Q4 2020 - Q1 2021

2020

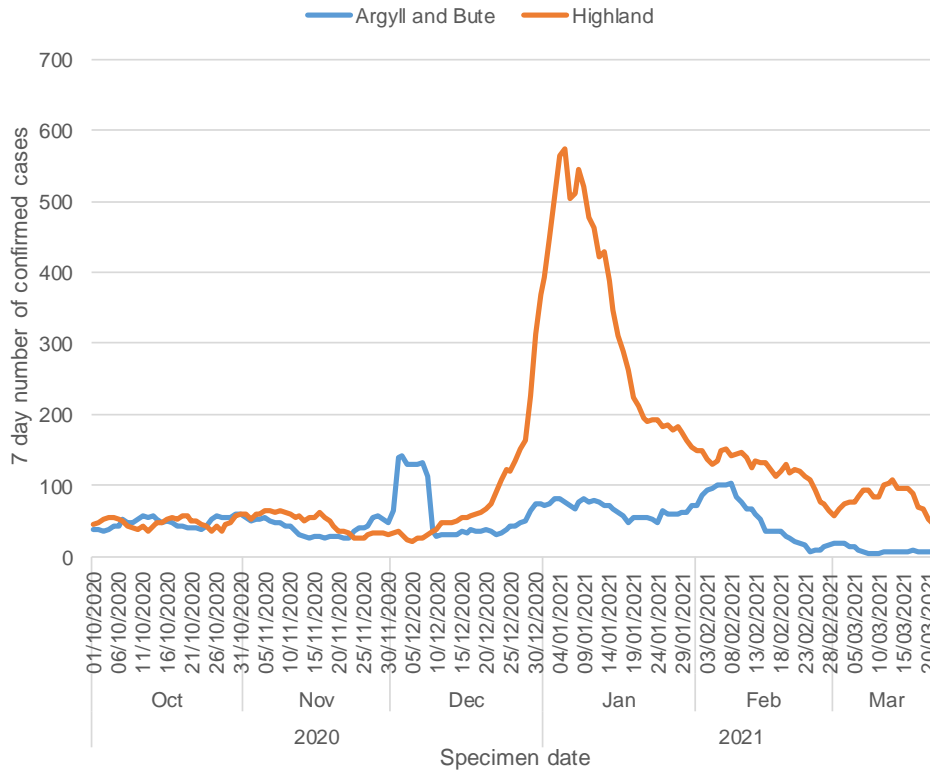


MONTHS

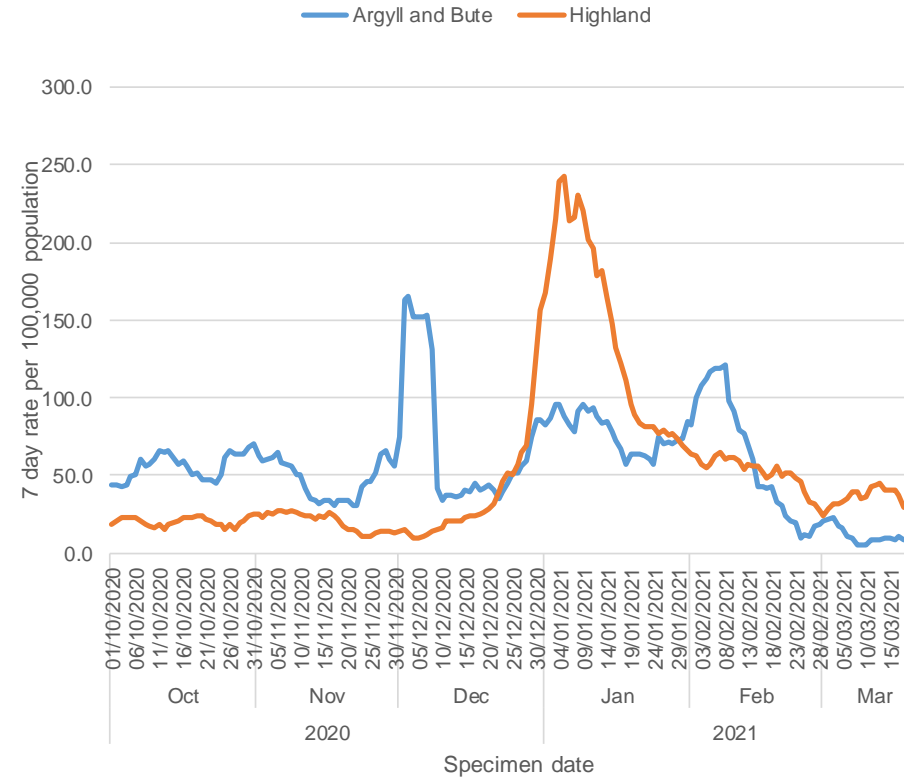
Argyll and Bute

Highland

Number of cases



Rates per 100,000 population



Testing rates vary across the week and data for the most recent three days will be partially complete

Data source: NSS Test and Protect Data Virtualisation Layer, NHS Highland BI Data Warehouse

# Estimated Dissemination Ratio (EDR) of COVID-19

NHS Highland Local Authority Areas



Date

Q4 2020 - Q1 2021

MONTHS

2020

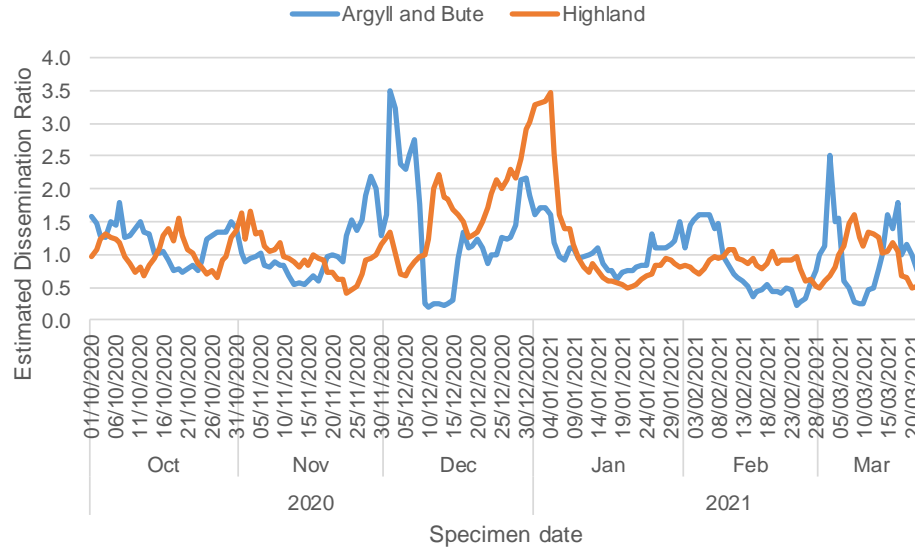
2021



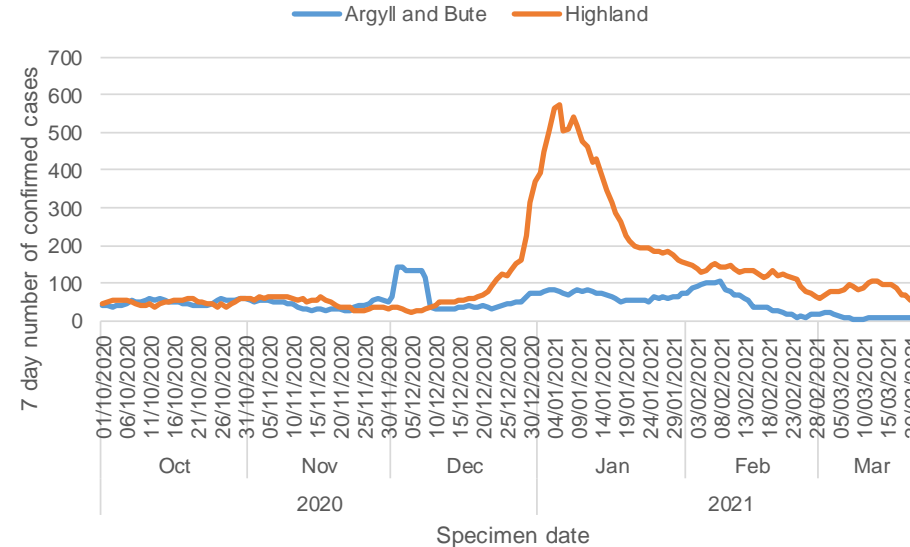
Argyll and Bute

Highland

## Estimated Dissemination Ratio



## 7-day number of confirmed cases



The Estimated Dissemination Ratio is shown as a 7 day rolling ratio of the total number of new cases in the last 7 days divided by the total number of cases in the previous 7 day period.

**An EDR of > 1 indicates that the epidemic is accelerating**

**An EDR of 1 indicates that the epidemic is neither accelerating or slowing**

**An EDR of < 1 indicates that the epidemic is slowing**

Testing rates vary across the week and data for the most recent three days will be partially complete

# Number and rates of new cases of COVID-19 over seven days

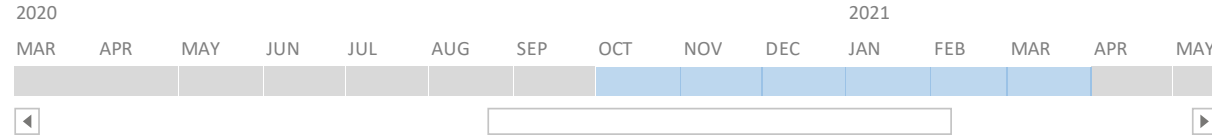
NHS Highland  
Broad age category



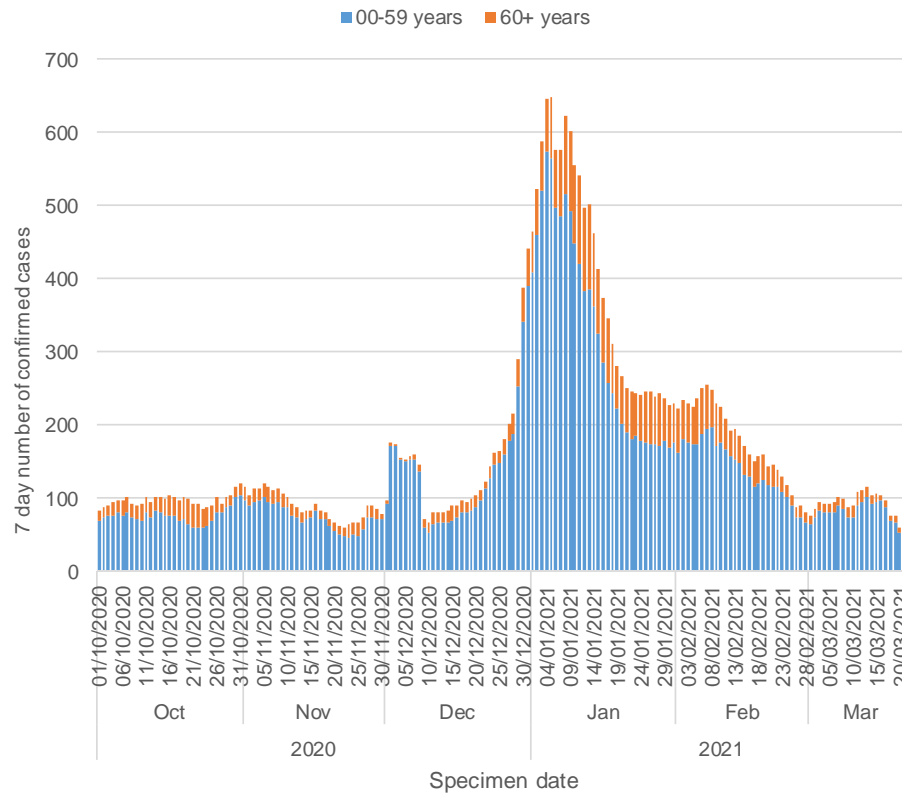
Date

Q4 2020 - Q1 2021

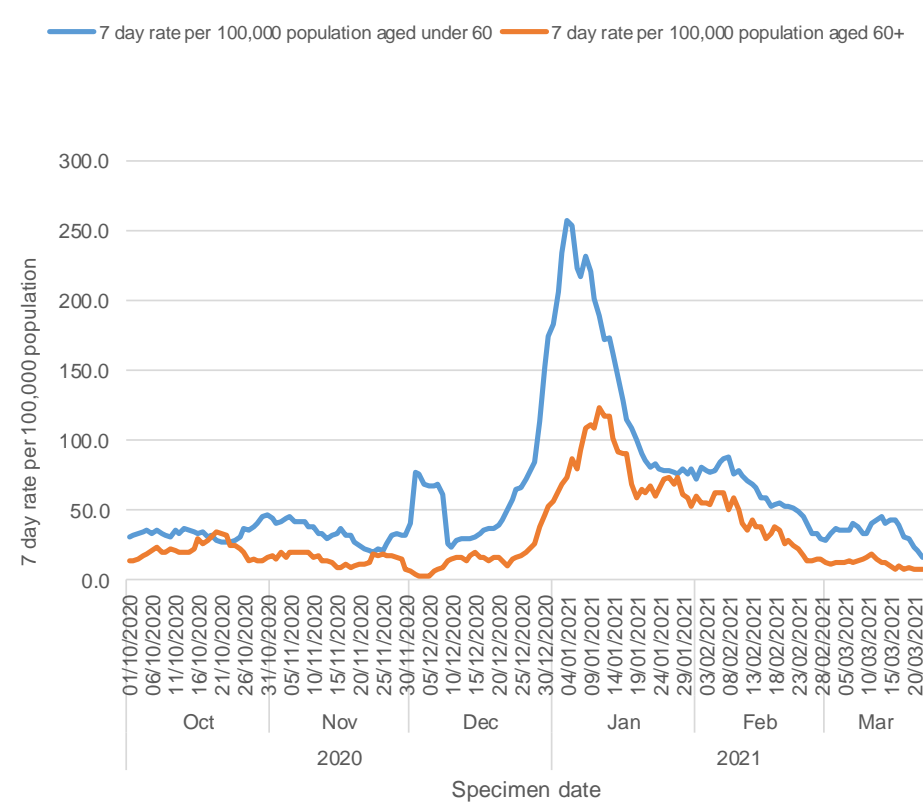
MONTHS ▾



Number of cases



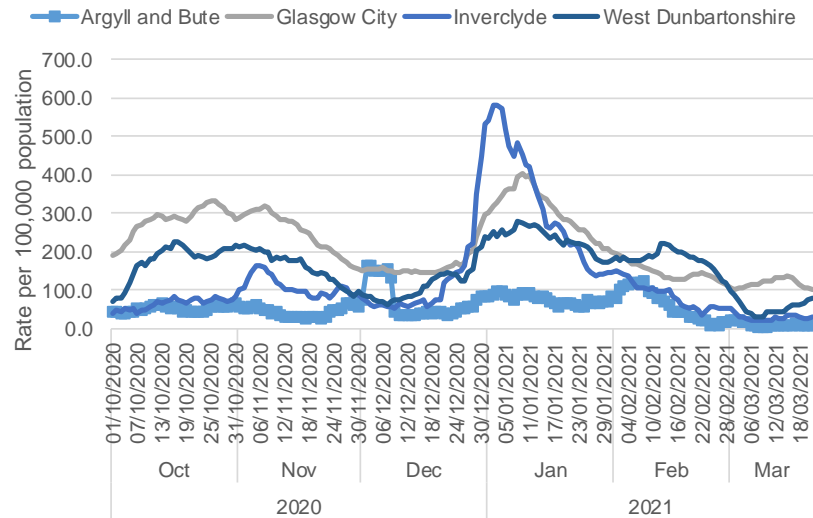
Rates per 100,000 population



Testing rates vary across the week and data for the most recent three days will be partially complete

# Confirmed new case rate per 100,000 population over 7 days

Local Authority Areas (selected)

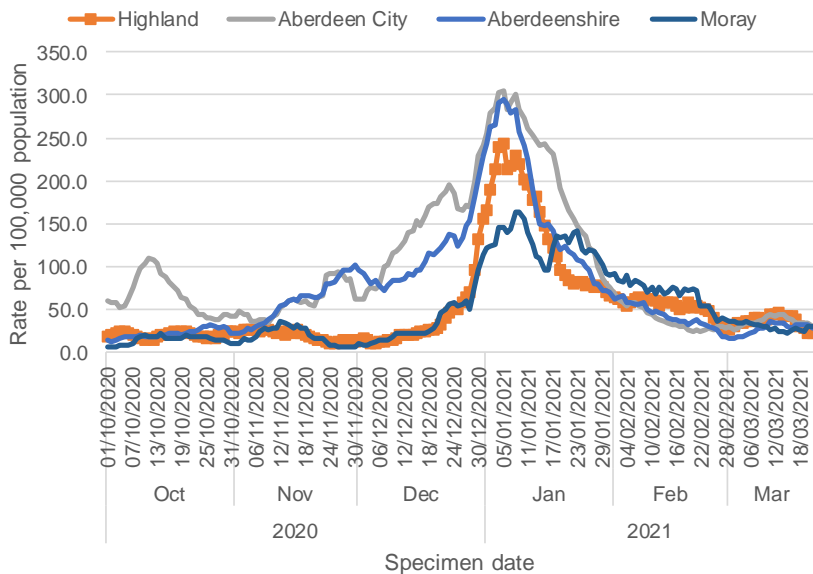
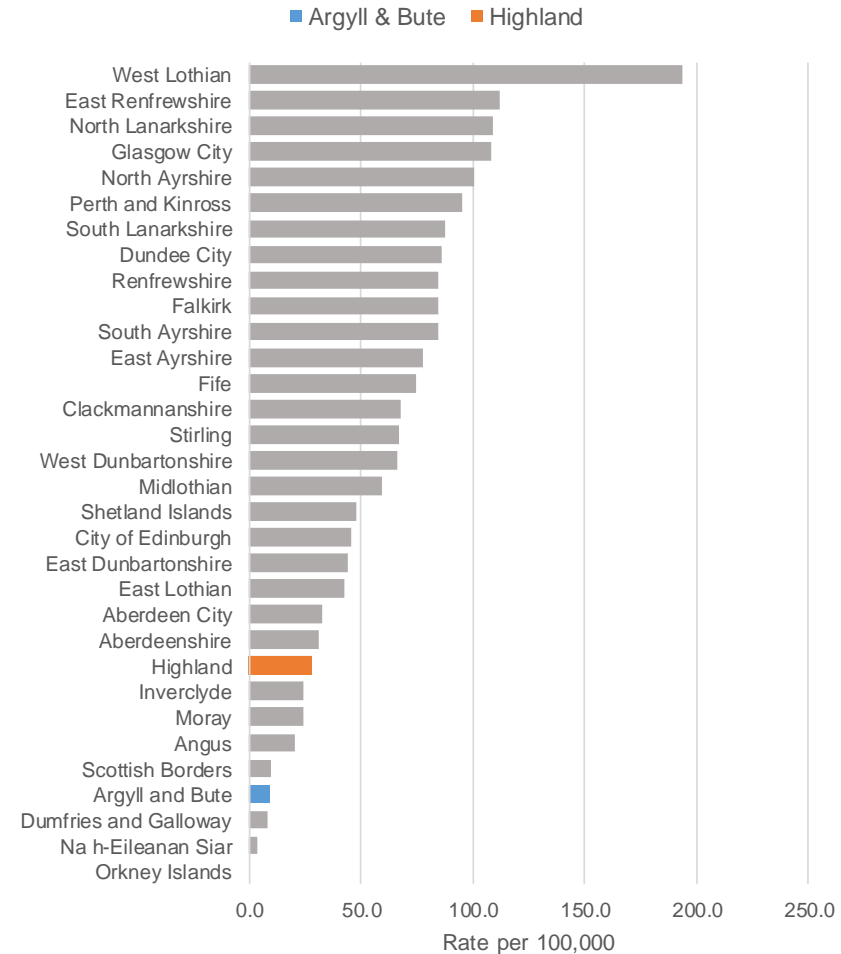


21/03/2021

20/03/2021

19/03/2021

7 day rate per 100,000 population for the week ending 19 Mar 2021



Testing rates vary across the week and data for the most recent three days will be partially complete



# NHS Highland Community Partnerships

Number and rates of new cases over seven days



Select week ending date

21/03/2021

20/03/2021

19/03/2021

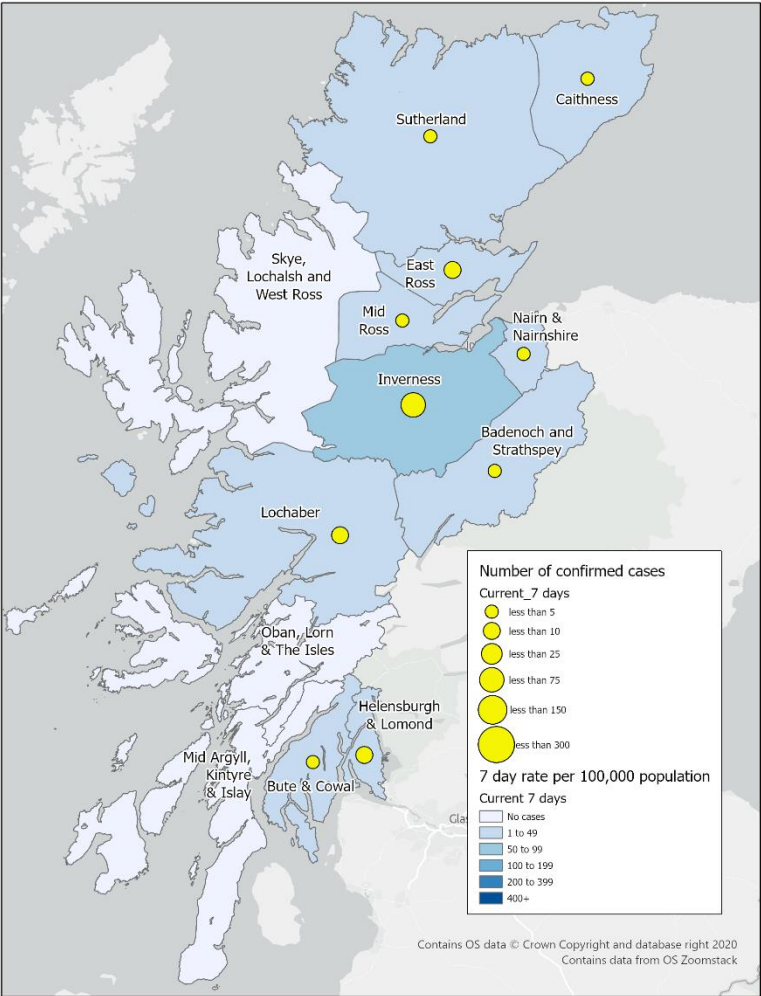
18/03/2021

Testing rates vary across the week and data for the most recent three days will be partially complete.

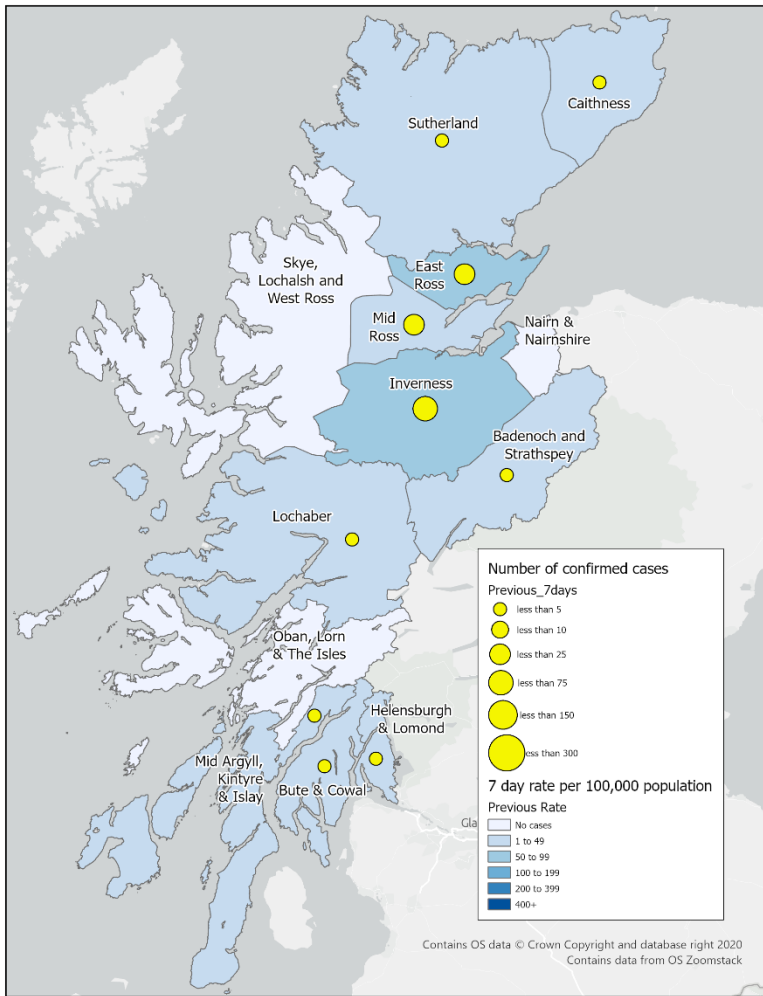
	Total number of confirmed cases over the 7 days (13/03/21 to 19/03/21)	Total number of confirmed cases over the previous 7 days (06/03/21 to 12/03/21)	Change in number of cases	Incidence rate per 100,000 population (13/03/21 to 19/03/21)
<b>NHS Highland</b>	<b>75</b>	<b>110</b>	<b>-</b>	<b>23</b>
Badenoch and Strathspey	1 to 4	1 to 4	-	Less than 20
Caithness	1 to 4	1 to 4	-	Less than 20
East Ross	7	19	-	31
Inverness	44	64	-	54
Lochaber	7	1 to 4	+	35
Mid Ross	1 to 4	10	-	Less than 20
Nairn & Nairnshire	1 to 4	0	+	Less than 20
Skye, Lochalsh and West Ross	0	0	nc	0
Sutherland	1 to 4	1 to 4	nc	Less than 20
<b>Highland</b>	<b>67</b>	<b>103</b>	<b>-</b>	<b>28</b>
Cowal & Bute	1 to 4	1 to 4	-	Less than 20
Helensburgh & Lomond	7	1 to 4	+	27
Mid-Argyll, Kintyre & Islay	0	1 to 4	-	0
Oban, Lorn & The Isles	0	0	nc	0
<b>Argyll &amp; Bute</b>	<b>8</b>	<b>7</b>	<b>+</b>	<b>9</b>

nc = no change

### Current Week



### Previous Week



**Confirmed cases of COVID-19 in the seven day period 13th March 2021 to 19th March 2021 by NHS Highland Community Partnership**

This map is reproduced from Ordnance Survey material with the permission of Ordnance Survey on behalf of the Controller of Her Majesty's Stationery Office. © Crown copyright and database right. All rights reserved. 100010825 2021

Directorate of Public Health  
Public Health Intelligence Team  
Larch House, Inverness  
Date: March 2021

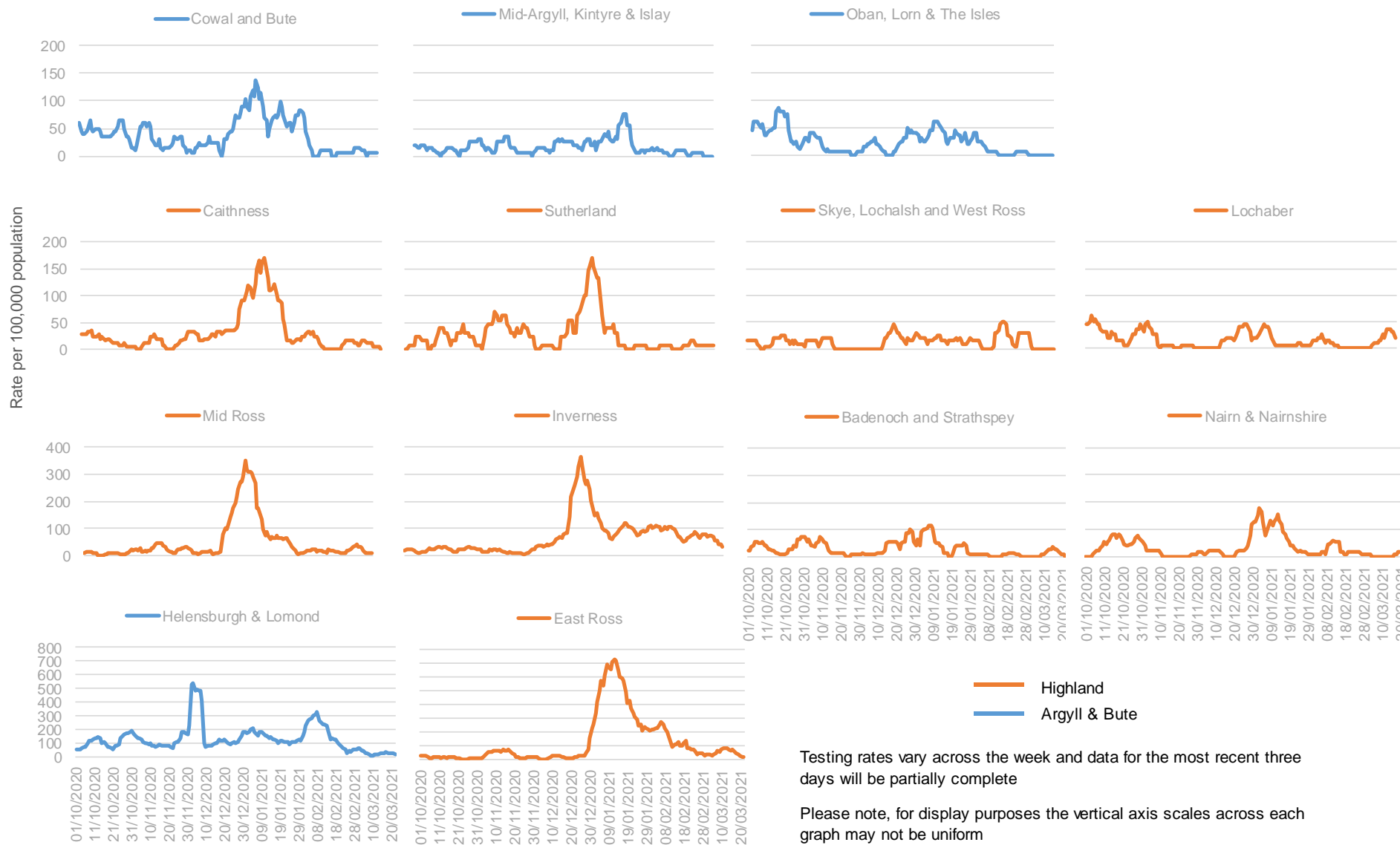
**Confirmed cases of COVID-19 in the seven day period 6th March 2021 to 12th March 2021 by NHS Highland Community Partnership**

This map is reproduced from Ordnance Survey material with the permission of Ordnance Survey on behalf of the Controller of Her Majesty's Stationery Office. © Crown copyright and database right. All rights reserved. 100010825 2021

Directorate of Public Health  
Public Health Intelligence Team  
Larch House, Inverness  
Date: March 2021

# NHS Highland Community Partnerships

Confirmed case rate per 100,000 population over seven days



# NHS Highland Community Partnerships

Rates of new cases over seven days: 13/03/2021 to 19/03/2021

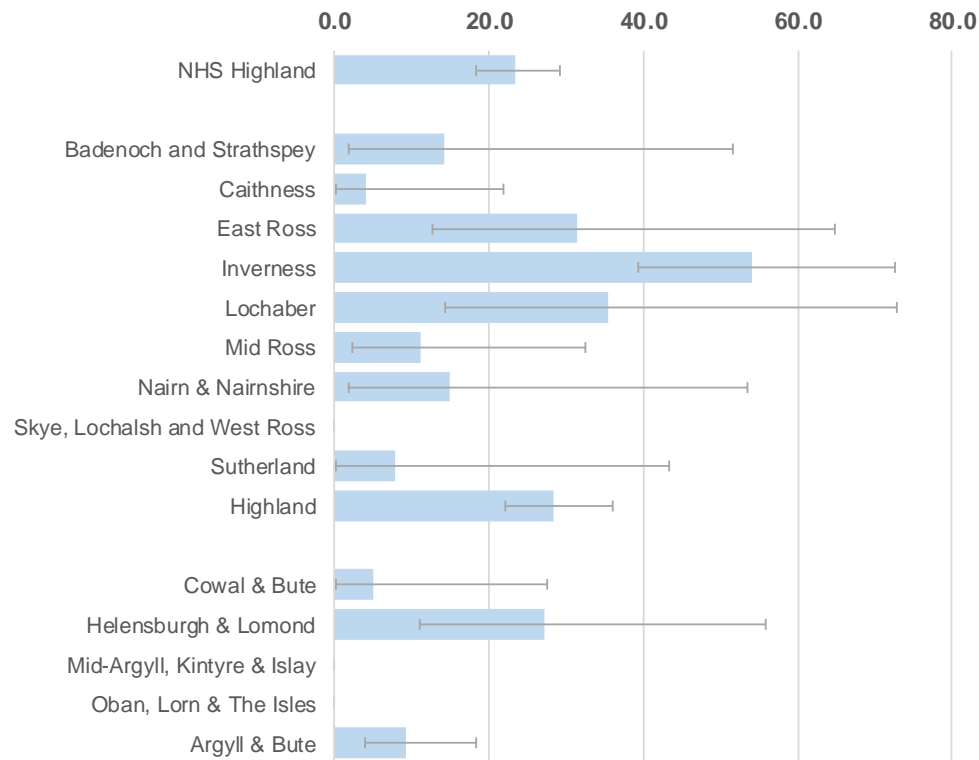


Select week ending date

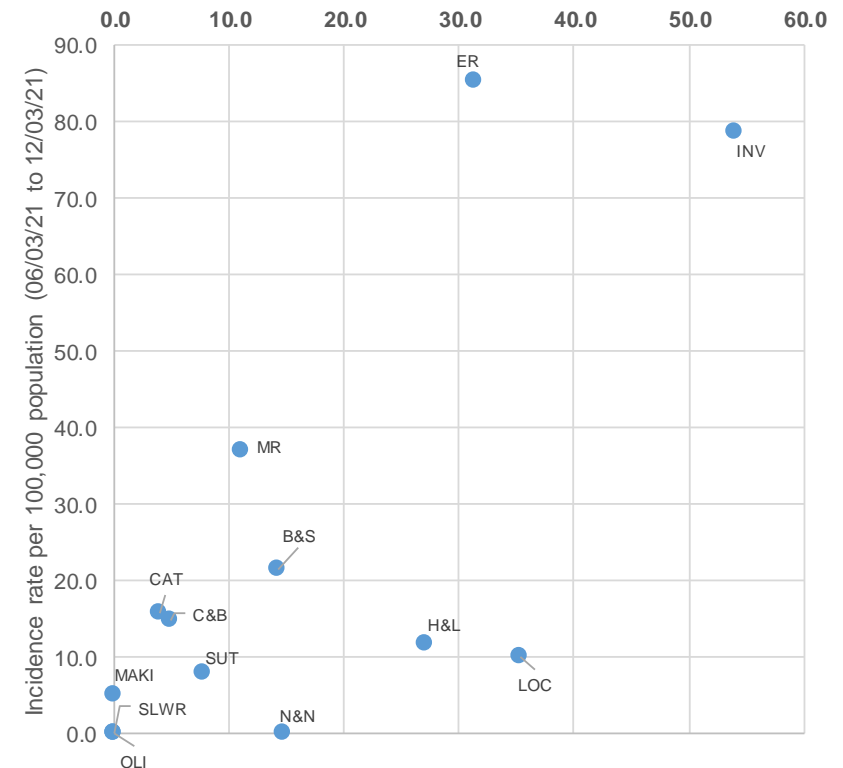
22/03/2021 21/03/2021 20/03/2021 19/03/2021

Testing rates vary across the week and data for the most recent three days will be partially complete.

Incidence rate per 100,000 population (13/03/21 to 19/03/21)

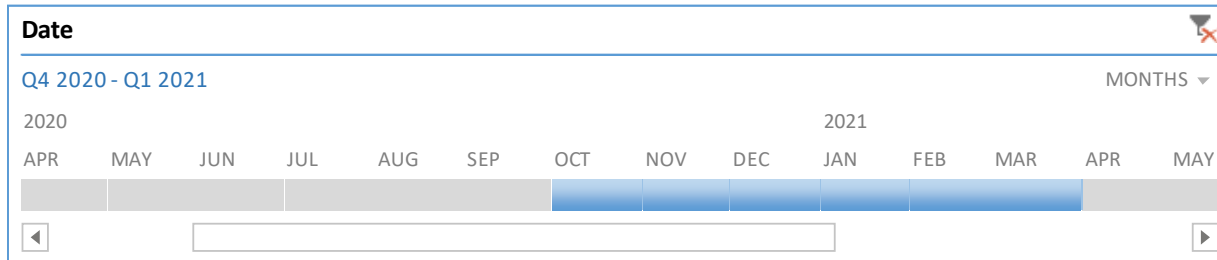


Incidence rate per 100,000 population (13/03/21 to 19/03/21)

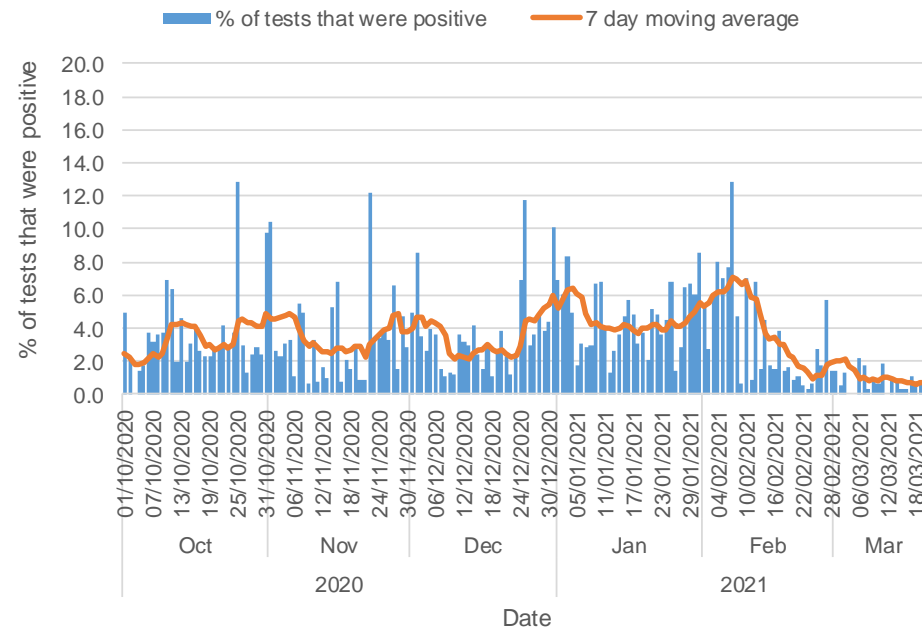


# Test positivity rate

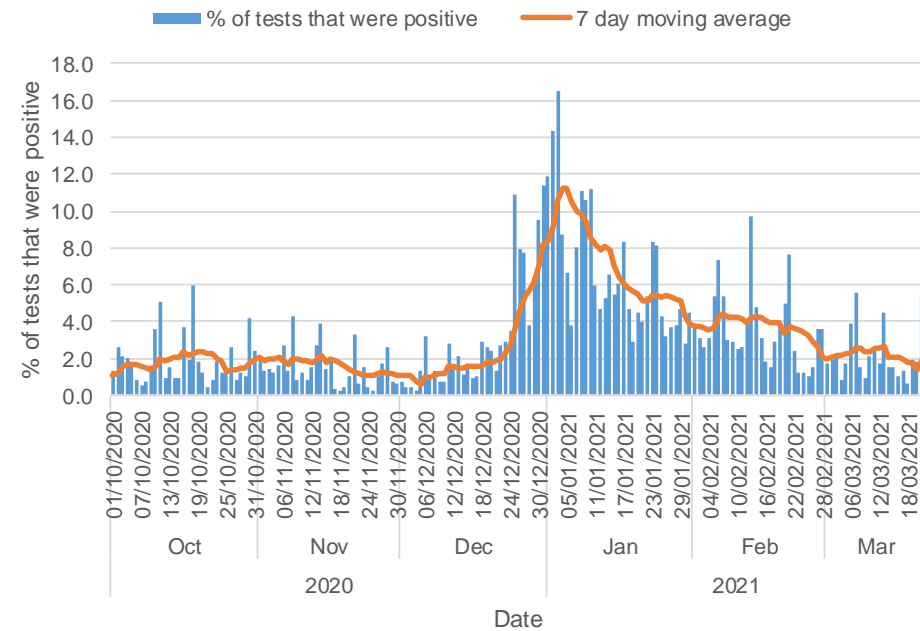
## NHS Highland Local Authority Areas



### Argyll & Bute



### Highland



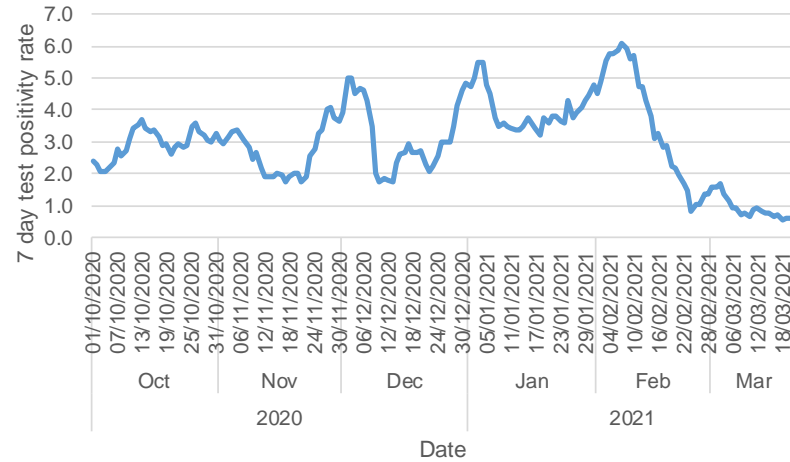
Test positivity rate is the number of newly reported positive tests divided by the total number of newly reported tests, in the specified time period, multiplied by 100.

# Seven day test positivity rate

NHS Highland Local Authority Areas



## Argyll and Bute



**Date** ✕

Q4 2020 - Q1 2021 MONTHS ▾

2020 2021

AUG SEP OCT NOV DEC JAN FEB MAR APR MAY

◀ ▶

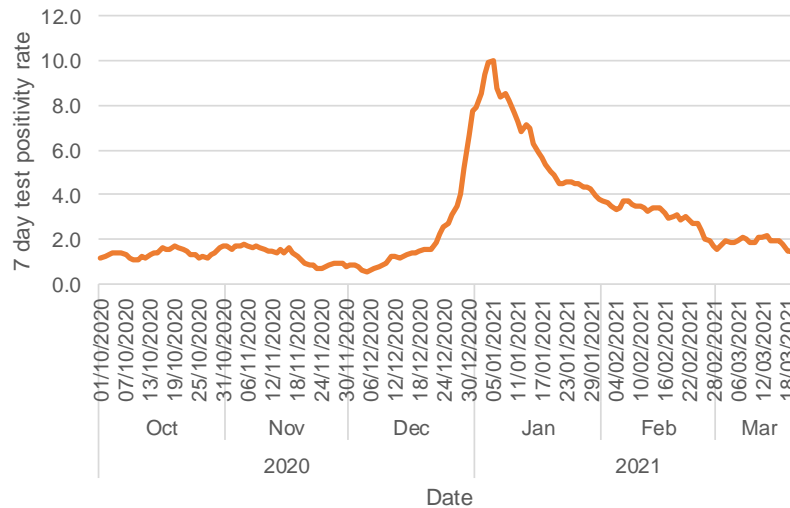
### Select week ending date

21/03/2021	20/03/2021	19/03/2021	▲
18/03/2021	17/03/2021	16/03/2021	▼

**Week: 13/03/2021 to 19/03/2021**

	Number of positive tests	Total number of tests	Test positivity rate (%)
Argyll and Bute	9	1511	0.6
Highland	80	5372	1.5

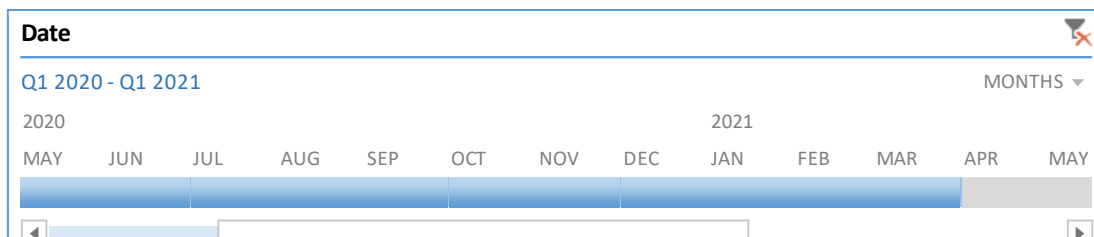
## Highland



Test positivity rate is the number of newly reported positive tests divided by the total number of newly reported tests, in the specified time period, multiplied by 100.

# Confirmed deaths from COVID-19

NHS Highland Local Authority Areas

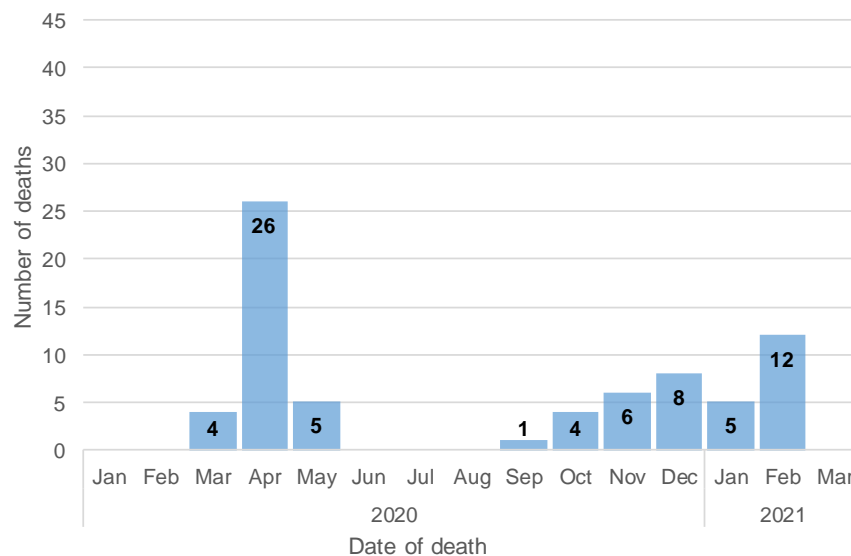


<b>Argyll and Bute</b>	Total number to date	71
	Total in selected period	71

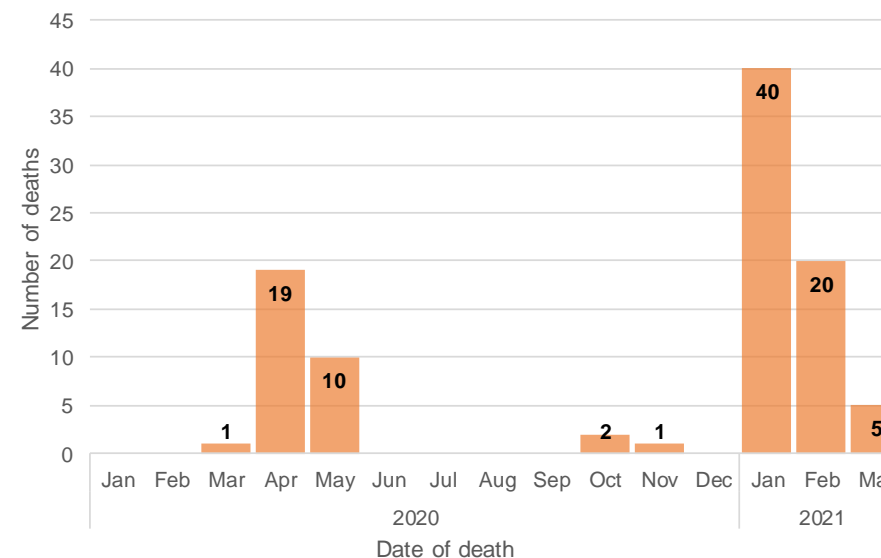
<b>Highland</b>	Total number to date	98
	Total in selected period	98

## Deaths (COVID-19 confirmed) by date of death

### Argyll and Bute



### Highland

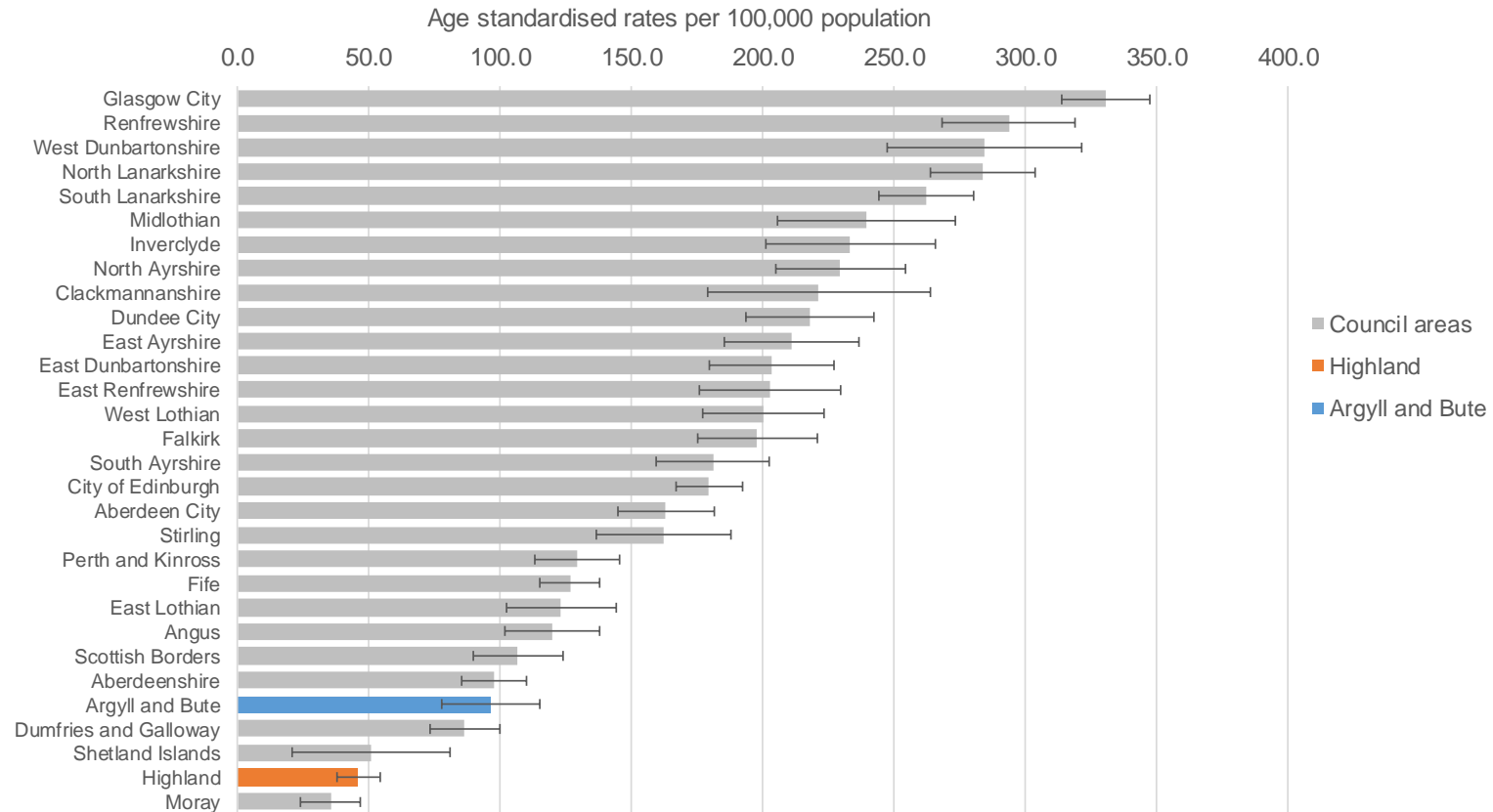


National Records of Scotland (NRS) deaths data linked to ECOSS testing data

Deaths refer to the total number of individuals who died within 28 days of their first laboratory confirmed report of COVID-19 infection and whose death was registered with NRS.

# Age standardised rates for deaths involving COVID-19 in Council areas

1st March 2020 to 28th February 2021



Age-standardised mortality rates are presented per 100,000 people and standardised to the 2013 European Standard Population. Age-standardised mortality rates allow for differences in the age structure of populations and therefore allow valid comparisons to be made between geographical areas, the sexes and over time.

The lower and upper 95% confidence limits have been provided. These form a confidence interval, which is a measure of the statistical precision of an estimate and shows the range of uncertainty around the estimated figure. Calculations based on small numbers of events are often subject to random fluctuations. As a general rule, if the confidence interval around one figure overlaps with the interval around another, we cannot say with certainty that there is more than a chance difference between the two figures.

Cause of death was defined using the International Classification of Diseases, Tenth Revision (ICD-10) codes U07.1 and U07.2. Rates include deaths where coronavirus (COVID-19) was the underlying cause or was mentioned on the death certificate as a contributory factor.

Figures are for deaths occurring between 1 March 2020 and 28 February 2021 and only include deaths that were registered by 10 March 2021.